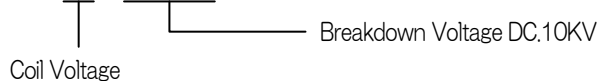


DC.10KV High Breakdown Voltage (1a · Dry Reed Relay)

LRL-10※-100PCV

■ Parts Number · Feature

● **LRL-10※-100PCV**



● High Breakdown Voltage DC.10KV
PCB type

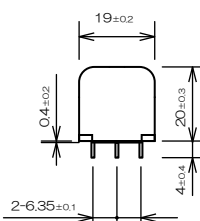
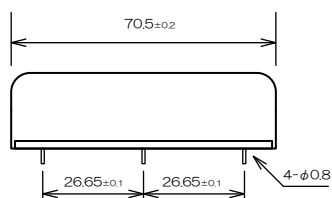
■ Performance

Specifications	Item	Standard	
Contact Specifications	Contact Form	1 Form a (Make)	
	Contact Rating	50W	
	Max. Switching Voltage	DC.5,000V	
	Max. Switching Current	0.5A	
	Max. Carry Current	3.0A	
	Contact Resistance	200mΩ MAX. (Initial)	
Electrical Specifications	Breakdown Voltage	Open contacts, Contact to Coil DC.10KV (1min)	
	Insulation Resistance	1×10 ⁹ Ω MIN. (DC.100V)	
	Capacitance	Open contacts 2.0pF MAX.	
	Thermal Electromotive Force	30μV TYP.	
	Operate Time Release Time	(include bounce) 3.0msec MAX. (at Nominal Voltage) 2.0msec MAX. (at Nominal Voltage)	
Mechanical Specifications	Vibration	20G(0~55Hz, 1.5mm)	
	Shock	30G(11msec, 1/2 sine wave)	
Environment	Operating Temperature	-10°C~+60°C	
Life Expectancy	Mechanical	5×10 ⁷ Operations MIN.	
	Electrical	DC.5,000V-10mA	1×10 ⁶ Operations MIN. (R.L.)
		DC.50V-0.5A	5×10 ⁶ Operations MIN. (R.L.)

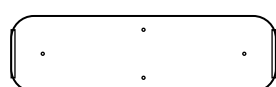
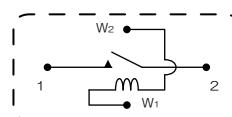
■ Coil Specifications

Parts Number	Nominal Voltage DC±10%[V]	Coil Resistance ±10%[Ω]at20°C	Nominal Current [mA]	Must Operate Voltage MAX.[V]at20°C
LRL-101-100PCV	24	720	33.3	16.8
LRL-102-100PCV	12	200	60.0	8.4

■ Dimensions / Terminal Identification (Unit : mm)



TOP VIEW



BOTTOM VIEW